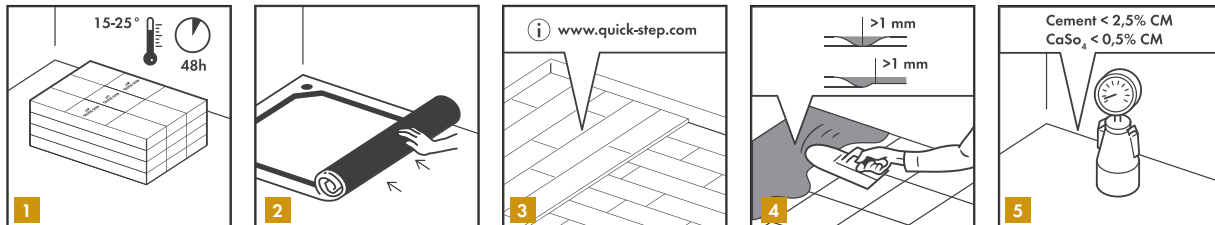


IN ORDER TO OBTAIN A GOOD RESULT, WE ADVISE TO FOLLOW ALL GIVEN INSTRUCTIONS CAREFULLY.



We recommend to order all panels for the same flooring project at the same time.

1

Always store and transport Quick-Step Livyn carefully to prevent distortions. Store and transport the boxes on a flat surface in neat stacks. Never store the boxes upright or in moist, dusty rooms or places with extreme temperatures. Quick-Step Livyn must be acclimatized in the room of installation between 15-25°C for a period of at least 48 hours before installation. The temperature needs to be maintained prior to, during and for at least 24 hours after the installation is completed.

Quick-Step Livyn has been designed for interior installations in temperature controlled environments. It cannot be installed in solariums, seasonal porches, camping trailers, boats or other exterior applications without being glued. If the temperature of your floor raises above 45°C, for instance due to direct sunlight, then it is recommended to glue the 3 first meters or as far as the floor reaches 45°C. Then continue your installation floating without underlay on a perfectly level basefloor. If you have any concerns about the temperature of your floor, please contact the Quick-Step technical department.

The type of subfloor, its quality and its preparation has a big influence on the final installation result. If the subfloor is not appropriate for the installation of Quick-Step Livyn then necessary actions should be taken. Contact your Quick-Step Livyn dealer, who will be more than happy to help you. Be aware that unevennesses in the subfloor may leave marks in your Quick-Step Livyn floor.

2

Remove any damp-open or soft floor covering first (e.g. carpet, needle felt, cushion vinyl, etc.) . Damp-sealed or hard floor covering (ceramic tiles, PVC, linoleum, VCT, laminate, etc.) does not have to be removed .

3

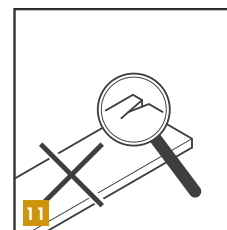
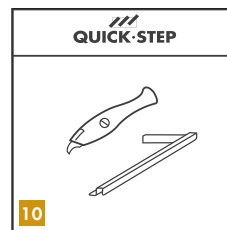
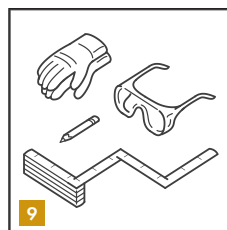
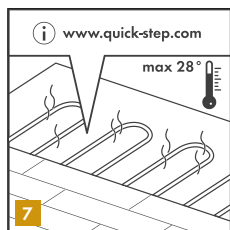
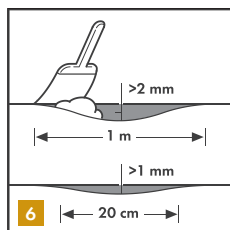
In case of installation on a wooden subfloor, please remove any existing floor covering first. No signs of mould and/or insect infestations should be present. Make sure the subfloor is level and nail down any loose parts. Apply a level floor or levelling compound on top for a perfect subfloor preparation. The crawl space under the plank floor must be sufficiently ventilated. Remove any obstacles and make sure there is sufficient ventilation (minimum 4 cm<sup>2</sup> total ventilation openings per m<sup>2</sup> of floor). The moisture content of the wood must not exceed 10%.

4

Make sure the subfloor is completely flat. Cement joints of more than 1 mm in depth should be levelled out using an appropriate levelling compound.

5

The moisture content of the subfloor must be less than 2,5% CM (cement screed) or less than 1,5% CM (anhydrite subfloor). In the case of floorheating, results must be respectively 1,5% CM and 0,3% CM. Always measure, record and keep your moisture content results.



6

Any unevenness of more than 1 mm over a length of 20 cm must be levelled out. The same applies to unevennesses of more than 2 mm over a length of 1 m. Use an appropriate levelling compound and check if a primer or sealer is needed. In some cases, the use of an underlay can avoid extra leveling of the subfloor.

7

Floor heating can be used with Quick-Step Livyn up to a maximum contact temperature of 28°C. Switch off your floor heating 24h before and after installation. For a good preparation, read also the separate installation instructions for floor heating on [www.quick-step.com](http://www.quick-step.com)

8

Make sure that the subfloor is dry, flat, stable, clean and free from grease and chemical substances. If needed, scrape off and clean up old adhesives. Prior to installation, carefully remove all debris (including nails), sweep and vacuum. Repair major surface imperfections and large cracks. It is recommended to remove old skirtings and to install new ones after the installation of the floor.

9

The following standard tools are needed: measurer, safety glasses, thin rope, gloves and a pencil.

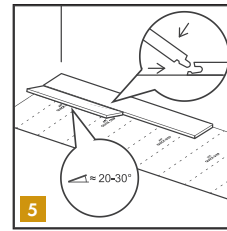
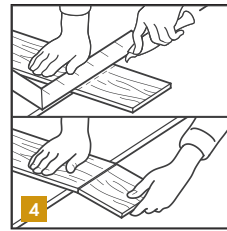
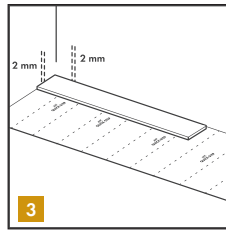
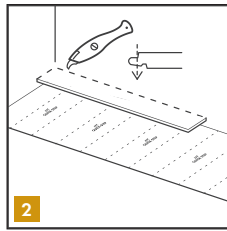
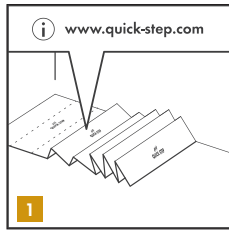
10

In addition to the standard tools, we recommend to use the Quick-Step Livyn cutter knife and installation tool. The latter serves as a 2-in-1 pulling bar and and carpenters square.

The use of all accessories other than Quick-Step Livyn accessories may cause damage to your Quick-Step Livyn. In such case the guarantee provided by Quick-Step will be void. For this reason we advise to use only Quick-Step Livyn accessories, which have been specially designed and tested for use with your Livyn. Never use a tapping block during the installation of Quick-Step Livyn.

11

Check all panels before and during installation in optimal light conditions. Defective panels must never be used.



During installation, make sure that you mix up the floor panels sufficiently so that there are not too many identical, lighter or darker panels next to each other. To obtain the best visual effect, it is best to fit the panels in the direction of the longest wall and parallel to the incidence of light. Ensure that the end joints of the panels in 2 successive rows are never in line, they should be staggered by at least 30 cm. Measure the room before you start fitting. Make sure that the last row of panels is at least 10 cm wide when finishing the installation.

**1**

First, start in the left corner of the room and fit an underlay if needed. We strongly recommend to use the special Quick-Step Livyn underlays, which have an insulating, sound-reducing and levelling function. You can find out more information about them and how to use them on the packaging of your underlay or from your dealer.

**2**

Start the first row with a whole plank. Cut off the long and short tongue of the first panel.

**3**

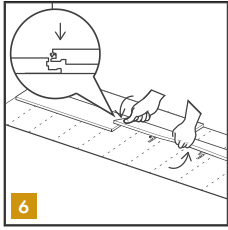
Fit the plank with cut off sides against the walls. Make sure that you leave an expansion joint of 2 mm.

**4**

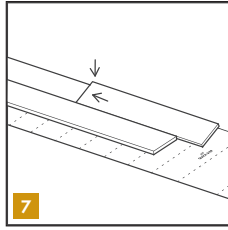
Quick-Step Livyn can easily be cut using a cutter or utility knife with the decor side face up. When cutting the vinyl plank, mark the line and use the knife to make a firm cut in the surface. Then break off the plank using both hands.

**5**

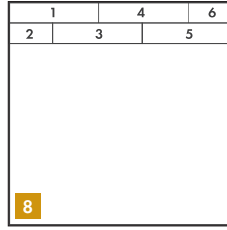
Turn the long side of the first panel of the second row into the already fitted panel at an angle of 20 to 30°. Move the panel to be fitted slightly up and down and at the same time exert some forward pressure. The panels will click together.



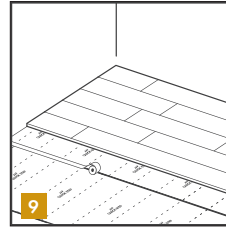
6



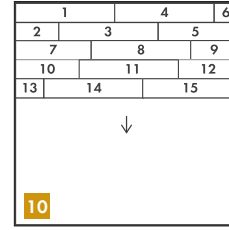
7



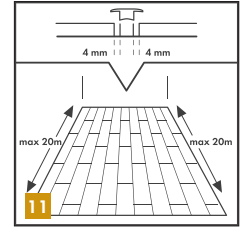
8



9



10



11

6

Then slide the third plank together horizontally. Slightly lift the plank to be installed by holding your hand underneath. Push the short side joint down gently with your thumb moving from the inner corner towards the outside until you hear a "click". This is the easiest method for fitting the Uniclic® Multifit for Livyn click panels.

7

Now connect the panels of the first two rows on the short sides.

8

Check the expansion gap of 2 mm and make sure the first rows are on a perfect straight line. You can check this by holding a thin rope along the installed planks and adjust the straightness of your floor when necessary.

9

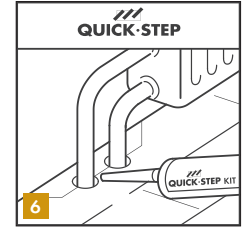
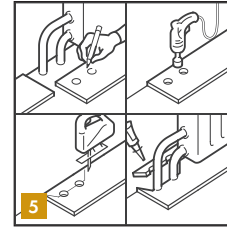
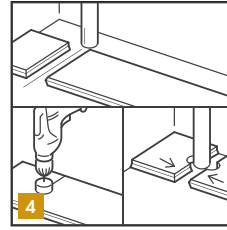
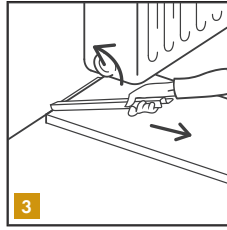
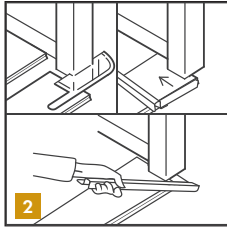
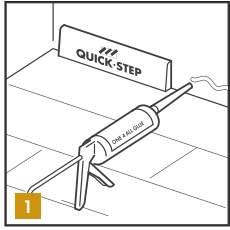
When the remaining piece of underlay is shorter than the width of a panel, install the next underlay. It is recommended to connect the underlays using thin tape.

10

Continue the installation like this row by row towards the end of the room. Always check each joint before continuing. You can press down gently with your thumb on top of every short end joint to ensure good locking.

11

An expansion profile is needed every 20 m lengthwise. An expansion gap of 4 mm underneath the profile base should be maintained. In the width direction of the planks there is no need for extra expansion gaps.



1

Inspect the final surface of the installed floor. Install Quick-Step Livyn skirtings against the wall but never attach the skirting to the floor itself. In places where profiles or skirtings cannot be placed, fill the expansion gaps with an elastic filler like the Quick-Step Livyn Kit. For rooms with a high moisture level like bathrooms, Quick-Step Livyn Hydrokit can be used.

2

When the new flooring meets a threshold or a doorway, we recommend undercutting the moldings. To secure the right cut, turn a plank upside down and place it on the floor up to the door frame. Then place the Quick-Step Livyn hand saw flat against the plank and simply cut through the frame. Remove the cut out and vacuum away debris. You can now simply click the plank in on the long side at the side of the undercutted molding. Use the Quick-Step Livyn installation tool as a pull bar to secure absolute tightness in the long and short joint.

3

If it is difficult to tilt the planks (e.g. under radiators), use the Quick-Step Livyn installation tool to pull the panels together.

4

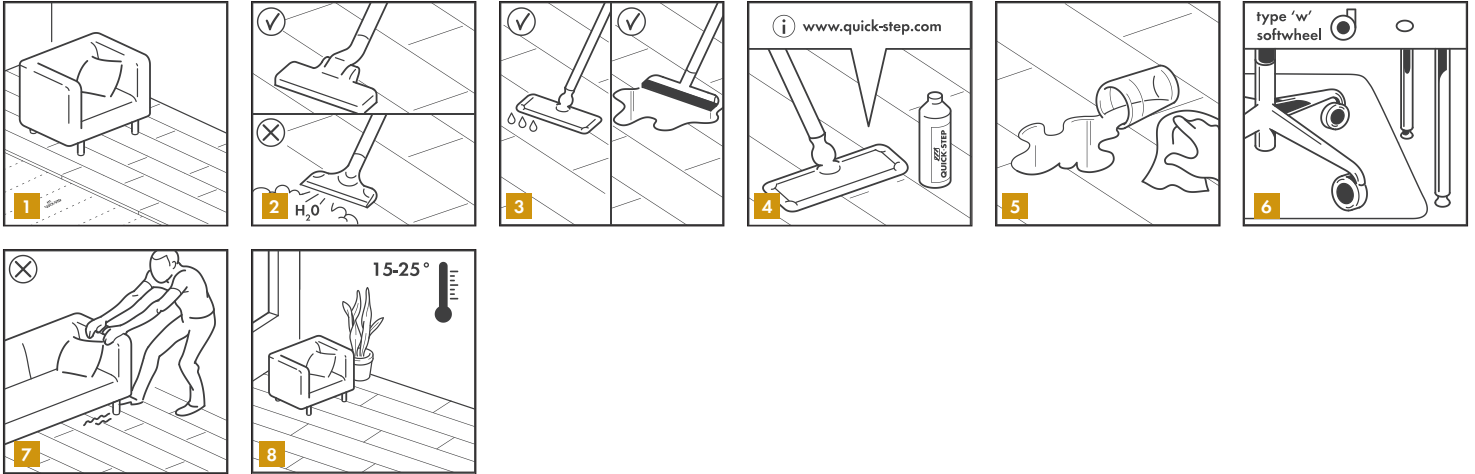
In rows where there is a pipe, make sure the pipe falls exactly in line with the short side of two panels. Take a drill bit with the same diameter as the pipe plus 15 mm. Click the panels together on the short side and drill a hole centered on the joint between the two panels. Now you can install the panels.

5

In case of a double pipe, drill a hole at each of the marked points that is equivalent to the diameter of the pipes plus 15 mm. If located on the long side of the plank, make a 45 degree cut from each hole to the edge of the plank.

6

Then, using an appropriate glue along the cut edges of the piece you cut out, glue the piece in place. Be sure no glue comes between the cut out piece and the subfloor.



1

You can immediately walk on your new Quick-Step Livyn floor after installation.

2

It is allowed to use a vacuumcleaner on your vinyl floor. The use of a steamcleaner is forbidden.

3

Your vinyl floor can be cleaned with a damp or wet mop.

4

Quick-Step Livyn Clean is a maintenance product specifically developed to keep your new Livyn floor in top condition. For further information on how to clean and maintain your floor, please visit [www.quick-step.com](http://www.quick-step.com). For specific cleaning instructions in commercial applications or projects, you can contact the Quick-Step technical department.

5

Always remove spilled liquids immediately from the floor.

6

Protect furniture and chair legs. Use (office) chairs and seats with soft wheels that are suitable for a vinyl floor and/or use a suitable desk mat.

7

Never drag heavy items of furniture over the floor but lift them up. Make sure furniture legs have a large surface and are provided with non-staining floor protectors. The taller and/or wider the furniture feet are, the greater the repartition of weight will be on the floor and the less chance there is to damage the floor.

8

Ensure that the indoor climate conditions are always kept between 15-25°C. It is also important to keep the subfloor in the above mentioned temperature range.

Place non-rubber backed mats at all outside entrances to prevent dirt, grit and soil from being tracked onto your floor. This will reduce damages, the maintenance requirement and extend the life of your floor. Please note that prolonged contact with rubber can cause a permanent stain.

Do not allow cigarettes, matches or other very hot items to contact the floor as this may cause permanent damage.

Flooring mats and furniture should be moved from time to time to avoid permanent color changes.